



## Bespoke Sydney Sider - Fact Sheet

The best way to explore a new city is with someone who knows it intimately, and appreciates it passionately! This full day, private, guided tour shows you Sydney at its best - from the most famous tourist icons, to the hidden gems that only a Sydney-sider knows how to find and enjoy.

## Trip Summary

---

### **Bespoke Sydney Sider**

9:00 AM

Meet your Bespoke Guide

Explore the City & Eastern Suburbs

Enjoy lunch by the sands of Bondi Beach...

Discover the northern shore

5:00 PM

Return to your hotel

## Bespoke Sydney Sider



9:00 AM -

### Meet your Bespoke Guide

Meet your Sydney Bespoke Tours guide in your hotel lobby to begin your day of private, tailored touring. This day is all about *you*, so discuss your interests and preferences with your guide so the day can be customised to suit you.

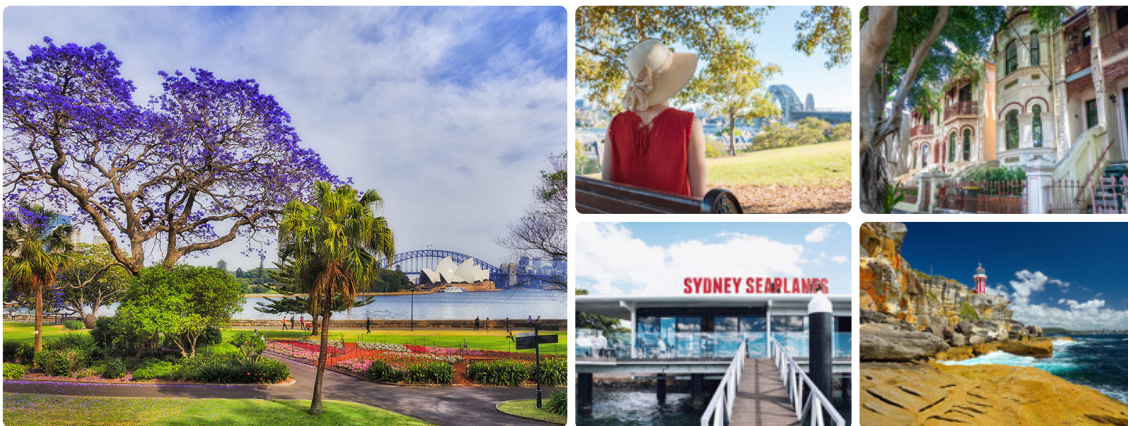


### Explore the City & Eastern Suburbs

Begin your day with a walk through the historic Rocks area of Sydney, the birthplace of Colonial Sydney. Here a group of exhausted and bewildered convicts and their keepers began to build a nation. Learn about their early beginnings, and their interaction with the Aboriginal people who had already been calling this area home for millennia. Take in the views over Sydney Harbour from Observatory Hill as your guide explains Sydney's unique origins.

See the colonial, sandstone buildings of Macquarie Street, and take in the vibrant foreshore precinct around the Sydney Opera House and Circular Quay. See the parklands of the Royal Botanic Gardens, and the sublime lookout point at Mrs Macquarie's Chair - beloved for its fabulous Insta-worthy views. Travel through the dock areas of Woolloomooloo and on to the glamorous Eastern Suburbs. Here you'll find areas that have evolved from working class, to inner-city chic. Some of the city's best galleries, boutiques, restaurants and bars can be found here along with lovely Victorian-era architecture. In the harbour-side suburb of Rose Bay you'll find Australia's first airport, and still today the wonderful Seaplane Wharf.

At South Head, the dramatic sea-cliffs are the perfect vantage point from which to take in the sweeping views up Sydney Harbour towards the city, or out east to the Pacific Ocean. There are some lovely walks and hidden spots in this area.



### Enjoy lunch by the sands of Bondi Beach...

At lunch time we head to Australia's most famous stretch of white sand - the famous beach and breaks of Bondi Beach. This is where locals and tourists alike gather to pay homage to the great Australian love of sun, sand and surf. Enjoy a casual café-style lunch in one of our favourite, beachside bistros, inclusive of a two-course meal and a glass of your favourite beverage.

After your lunch, you may like to get some exercise and take in the stunning views with a walk on the famous Bondi to Bronte Cliffwalk. This spectacular walking track is a locals' favourite, taking you past the iconic Bondi Baths and Icebergs Swimming Club, and on to hidden gems like Tamarama Beach and Mackenzies Point.





### Discover the northern shore

In the afternoon, head back towards the city and over the iconic Sydney Harbour Bridge to discover Sydney's beautiful northern shore. Beautiful parklands, hidden harbourside beaches, quiet leafy suburbs, and spectacular clifftop views await.

Stop off at Middle Head for a wonderful vantage point looking across to the city, with great views up and down the Harbour. This is also a great spot from which to explore Sydney's war history, with remnants of war fortifications still on display. The lovely walks in this area are a great way to learn more about Sydney's Aboriginal past, with indigenous middens evident, and to see the glorious Sydney Red Gums that stand sentinel beside the water.

Depending on your time and interests, your Guide can tailor the afternoon to take you to the quiet haven of Balmoral for a swim or walk with the locals, or head to vibrant and busy Manly Beach. Grab an ice cream as you walk the Esplanade, or take a stroll along the pretty beachfront walkway to secluded Shelly Beach.



5:00 PM -

### Return to your hotel

At day's end your Sydney Bespoke Tours guide will return you to your hotel, after what we hope has been a fabulous day in Sydney. Don't forget to take advantage of your Guide's extensive knowledge, and ask for restaurant suggestions or ideas for the remainder of your time in Sydney. Thanks for exploring Sydney with us!

## Information & Documents



### Inclusions

- Complimentary hotel pick-up and drop-off
- Services of an experienced, engaging and knowledgeable Sydney Bespoke Tours guide
- Transport in a private vehicle
- Morning or afternoon tea at a great local spot
- Two-course lunch at one of our favourite Sydney restaurants
- Flexible touring options, tailored to suit to make the most out of your day



### Reminders for travel

Unless otherwise arranged, your Guide will meet you in your hotel Lobby. Please ask your hotel Concierge for assistance if you are having trouble locating your Guide, or call us on +61 4 0077 5755.

Please dress for the day, in clothes that are comfortable for touring. Keep in mind that the sun in Australia can be very strong, so please bring along a hat and wear clothing that will protect you from the sun. You may also wish to bring along clothes for swimming and a towel, in case you're tempted to take a dip!

This day is all about *you!* Please feel free to share your interests, preferences and any special needs with your Guide, so we can tailor your day to create the perfect experience for you.



### **Terms & Conditions**

Please see our Terms & Conditions on our [website](#) for details.